



EMC.KnowledgeBase

Paperless manufacturing in the digital factory

The **simple and digital provision** of relevant information and documents for each order has a decisive impact on the **efficiency of manufacturing**. For this purpose, **EMC.KnowledgeBase** provides all documents and information on the production of the order. **Digitally and at the push of a button, directly at the MES terminal on the shopfloor or mobile on a tablet.** The employee adds his experience and information directly on site, **without separate printouts or physical order folders**. In addition, **information can simply travel with each container** - as a smart replacement for the goods or container label.

Status Quo

Information on the Shopfloor



EMC.KnowledgeBase

Bundle information and make them available – without paper



For every order there is a small flood of folders, slips of paper, printouts with work instructions, drawings, order papers, article data, goods labels, lists, and so on. The associated **expenditure of time and money is enormous**.

In networked manufacturing, this is a thing of the past, because the **simple and digital provision of relevant information and documents for each order** has a decisive impact on **manufacturing efficiency**.

The **EMC.KnowledgeBase module** offers **extensive functions** on the shopfloor to facilitate access to existing information and specifications from work preparation, to supplement them directly at the terminal, and to make them available everywhere in bundled form. It not only saves every employee a lot of time previously spent searching for, finding, or printing out the necessary files, drawings, or instructions, but also enables a **nearly paperless manufacturing**, without separate printouts or physical order folders.



EMC.KnowledgeBase

Efficient provision and supplementation

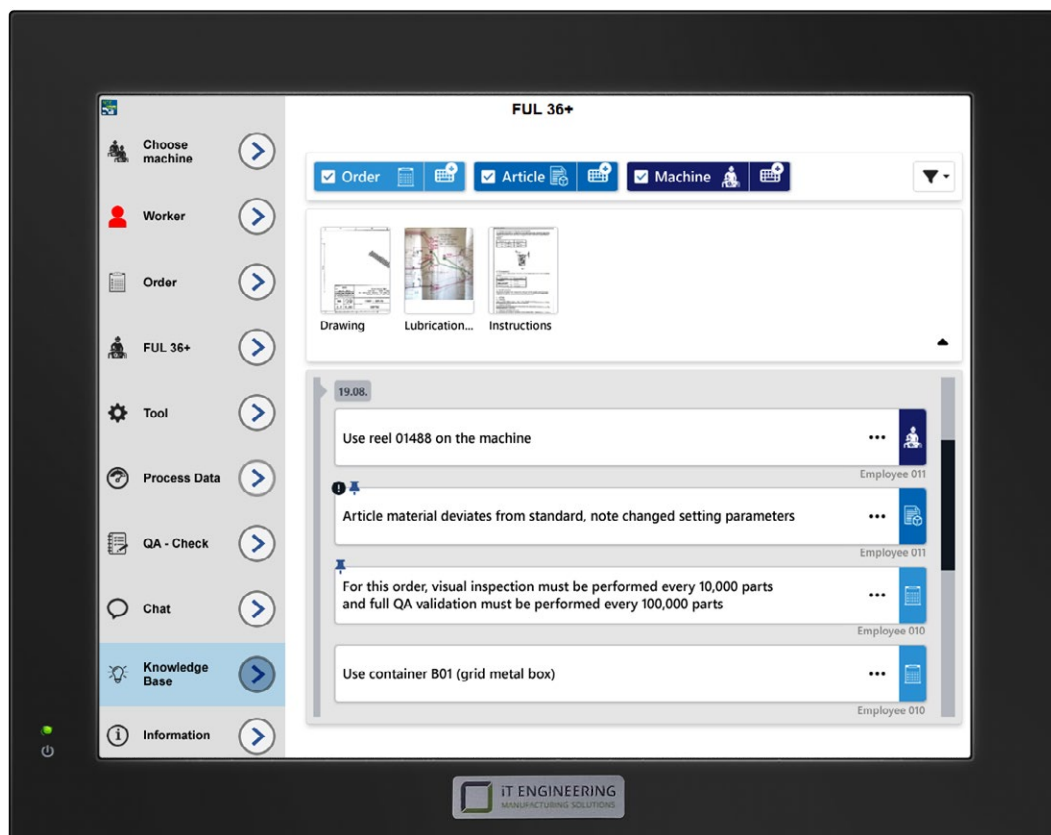


For the management of references to documents and relevant information as well as their display and supplementation, the **EMC.KnowledgeBase module** offers three filters:



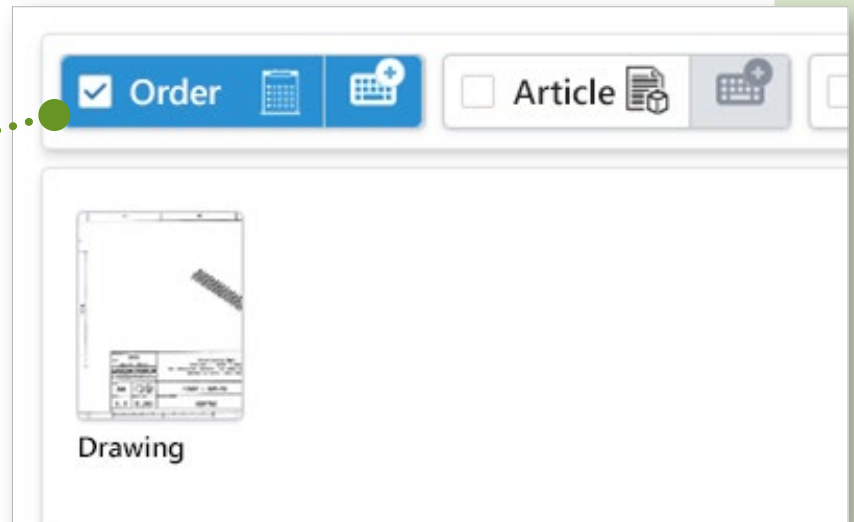
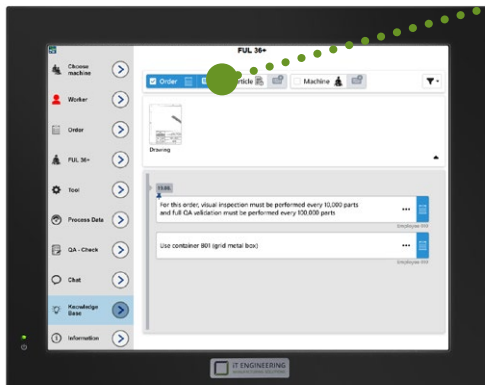
For each of these filters, **predefined information can be provided as images or text, drawings or documents, work instructions and order papers** in the work preparation.

EMC.Knowledgebase Plus: In addition, important information or instructions can also be entered **directly at the MES terminal** for each filter.



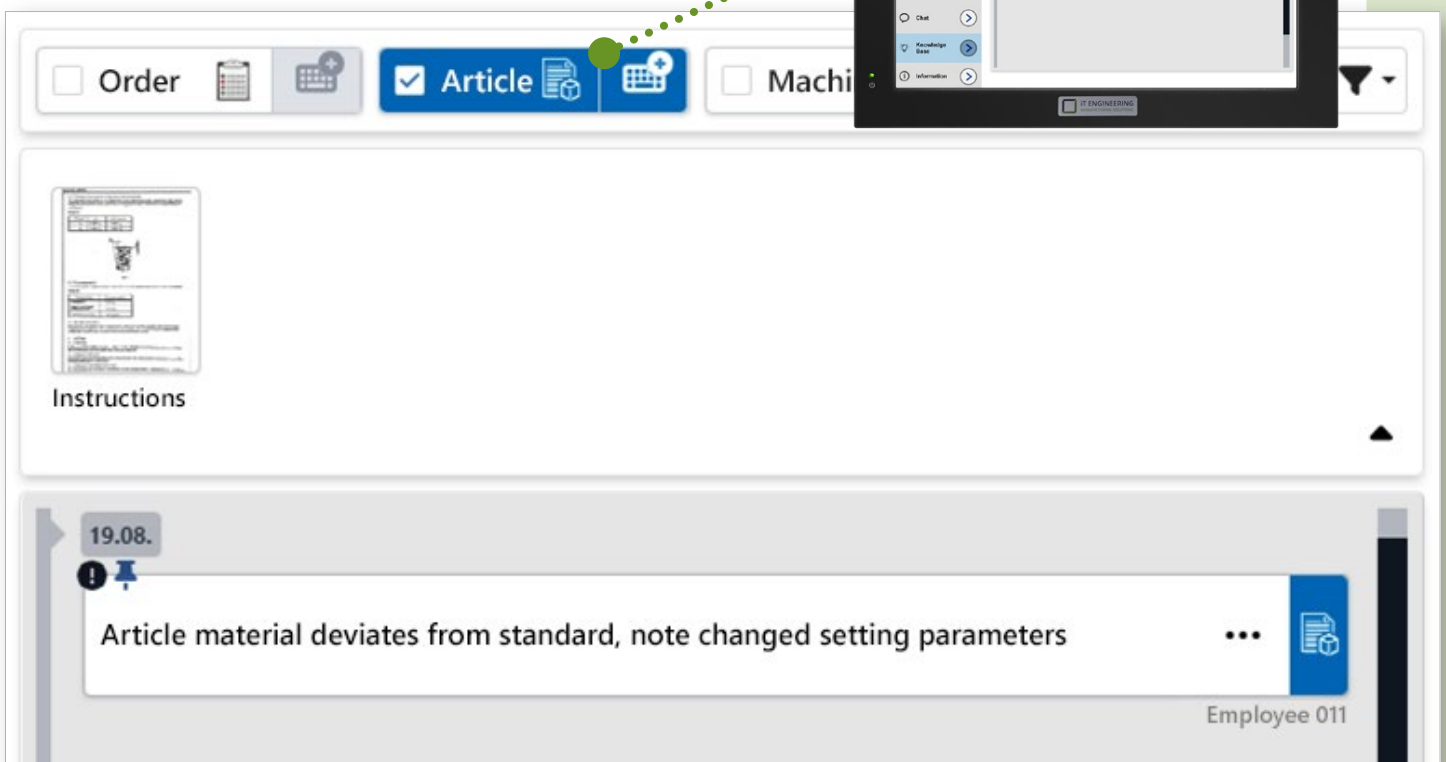
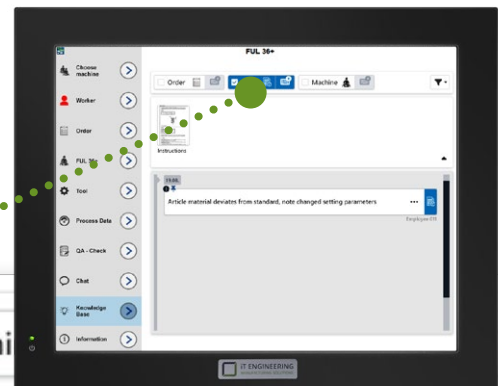
Order

All information and documents relevant for the respective order are **directly available at the MES terminal**.



Article

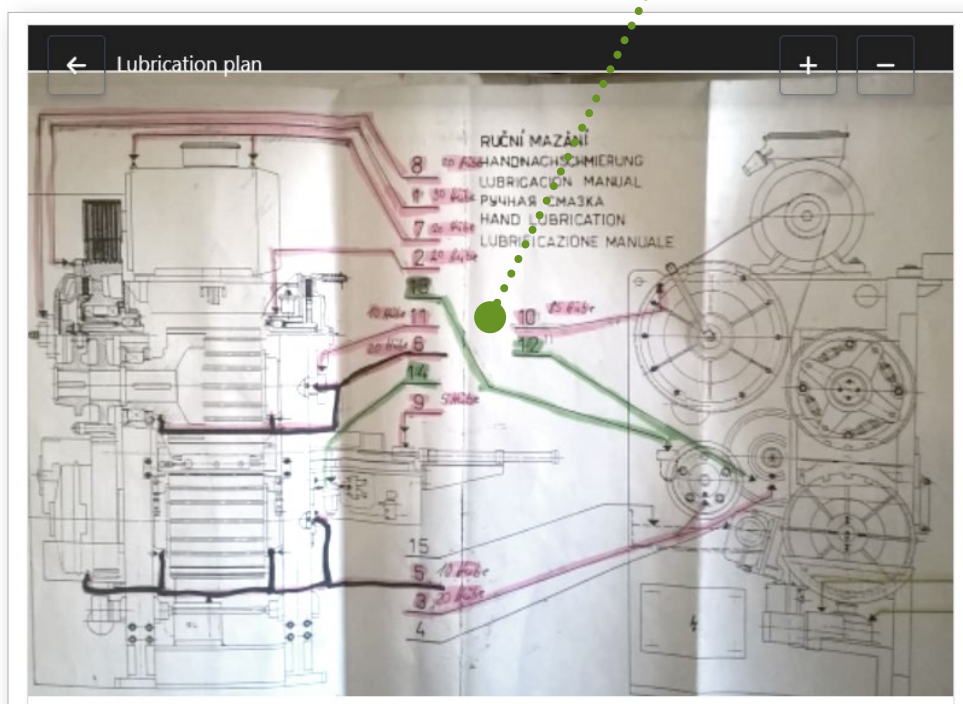
Article data, drawings and more can be **called up digitally at any time** for every article produced. Separate order or article folders with printouts of this information are thus obsolete.





Machine

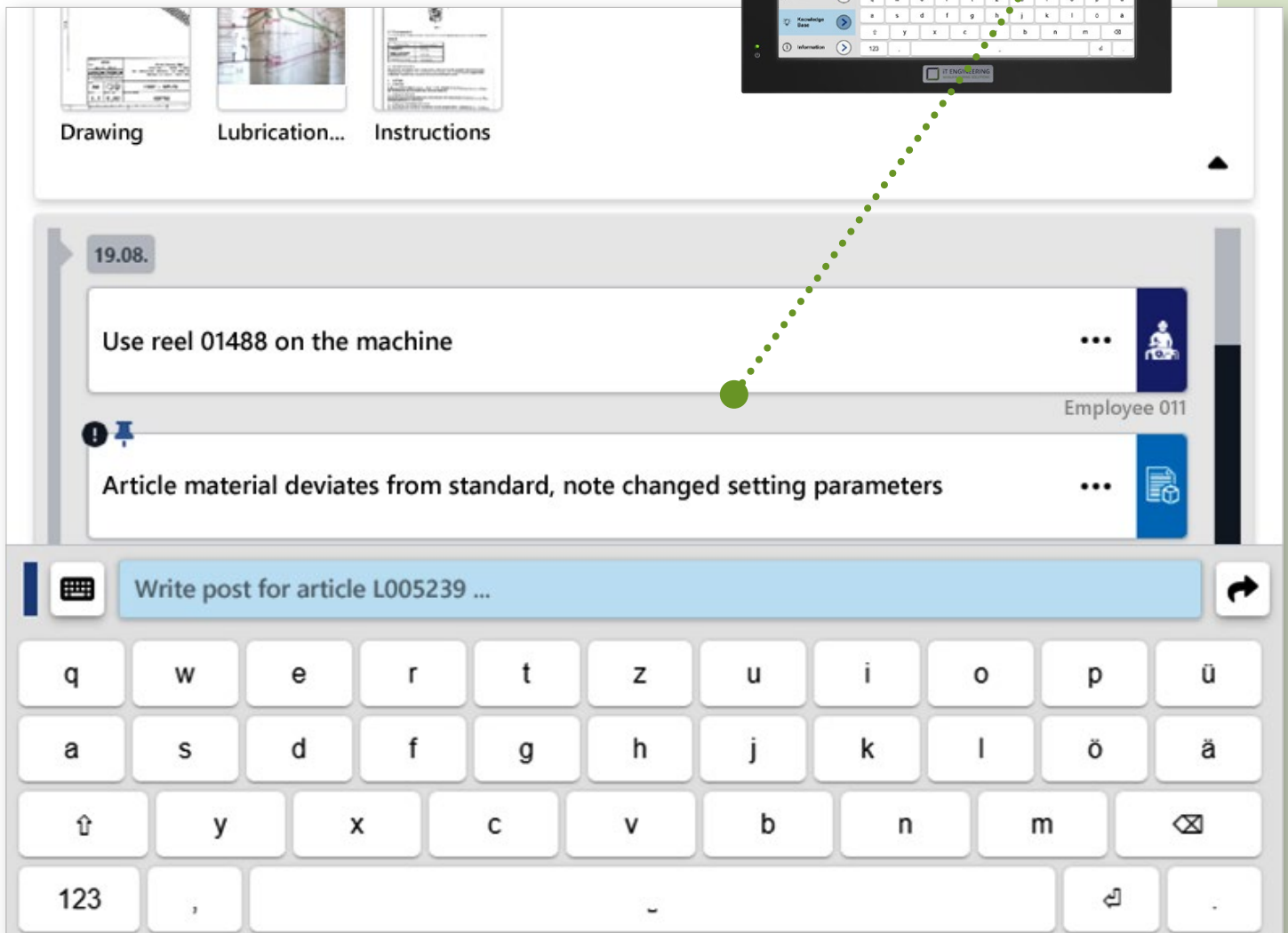
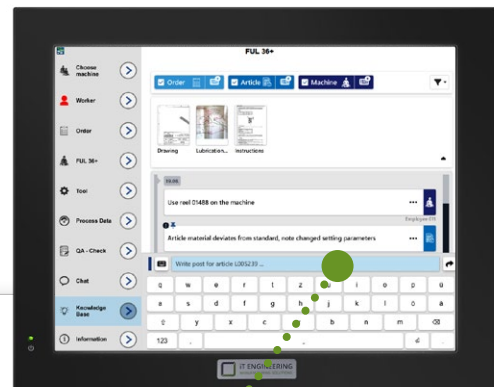
Documents important for the machine, such as lubrication schedules or drawings, are stored for **the respective machine**. The machine setter does not have to dig through documents, but is given **quick and efficient access** to the information and documents required for his work



EMC.KnowledgeBase Plus

Add and supplement information on an ongoing basis – directly in production

Without leaving their place at the machine, the worker can easily enter new information on the job, article and machine with the **EMC.KnowledgeBase Plus** option. Important instructions and notes are thus available for the next work steps or the next orders **directly and without detours exactly where they are needed.**



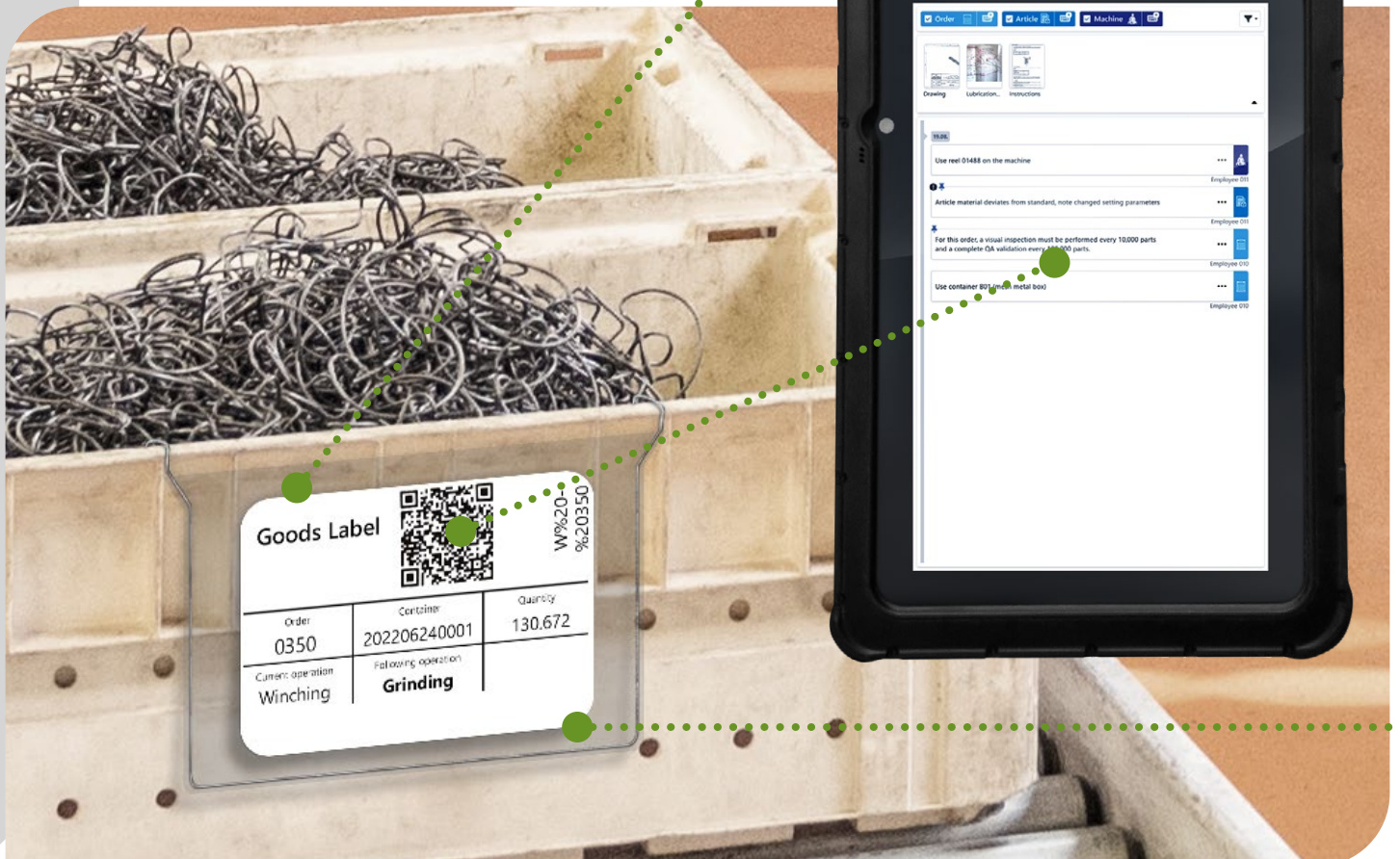
EMC.KnowledgeBase Advanced

Let information travel with each container

The information stored in the **EMC.KnowledgeBase module** can also be used directly for the unique identification of parts and containers. **This eliminates the need for goods or container labels**, which are otherwise printed out umpteen times for all containers and filled out by hand.

The content of the **goods label** created and printed directly from the system can be configured individually and thus, in addition to the order and container number, also contain the number of pieces, the current and the next work sequence and other information relevant to your production, such as the location.

By **scanning the QR code**, you receive the same data, information and documents as at the terminal at any time. This guarantees **maximum transparency, efficiency and traceability**.



Parts and containers uniquely, paperlessly and digitally identifiable

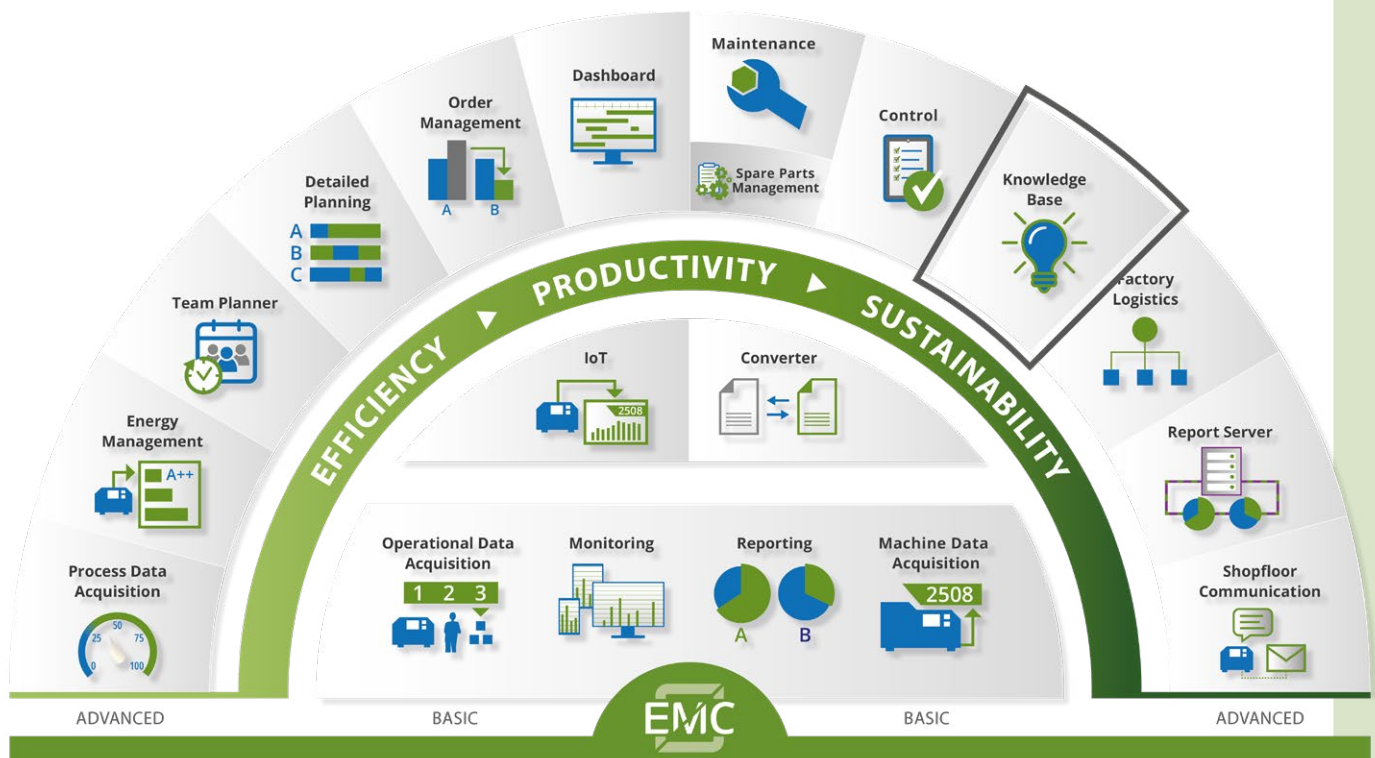


MES Software EMC

The solution for your smart networked manufacturing

Our user-friendly MES Software EMC controls all digital processes on the shopfloor **from planning, implementation, maintenance to traceability, shipping, production orders and a sustainable evaluation.**

It adapts completely to your needs, integrates into your existing IT landscape and brings together the data streams from ERP and the shopfloor.



The **modular architecture** of the MES Software EMC offers you the important **freedom and flexibility** in the implementation of your future-oriented production. Together with the **central MES database**, it is the basis for a **customer-oriented implementation - step-by-step or holistically - individual modules or as a complete system.**

No matter which solution you choose, with EMC you are always one step ahead and have the **best possible transparency** in production. All with the aim of **increasing your efficiency.**



iT Engineering Manufacturing Solutions GmbH is your provider of a well-developed Manufacturing Execution System in production management.

As an IT and MES expert in the metal forming industry and thanks to our large network of partners and memberships in associations (including VDFI and netzwerkdraht e.V.), as well as the best contacts with machine manufacturers, we know exactly how to obtain the important data and how to use it to digitalize processes and thus increase efficiency and productivity in manufacturing.

Our MES Software EMC acts as a central information hub and, by integrating the production data, ensures integration of production data for transparent production processes, flexibility and cost efficiency.

With a high level of technical and industry competence as well as many years of experience and expertise, we accompany you personally and step by step in transforming your production into a digital factory.

iT Engineering Manufacturing Solutions GmbH

Jusistraße 4

D-72124 Pliezhausen

Phone +49 (0) 7127 9231-10

info@ite-ms.de

www.ite-ms.de



WE ENABLE SMART MANUFACTURING